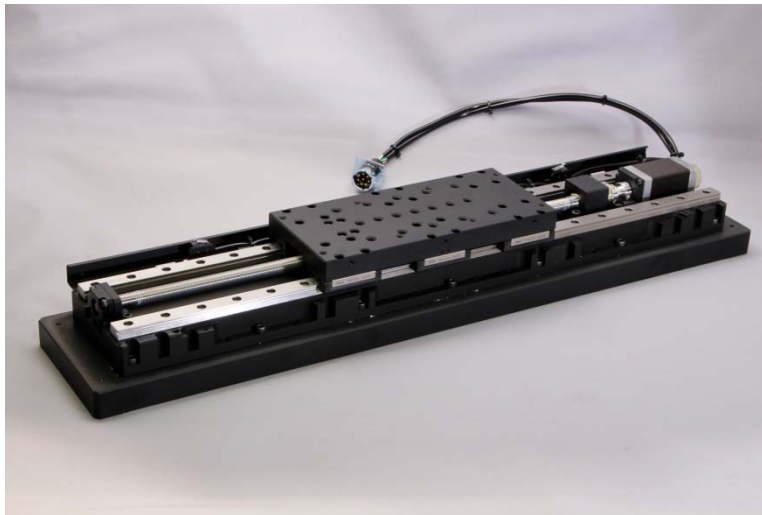


Long Travel Translation Stage for Delay Line <HPT-2>

This stage is developed for laser delay line. It has 300mm long travel and very small pitch/yaw error in long travel motion.



Features

◆ Useful device for
- Delay line of Laser
- Long stroke scan

◆ Pitch/Yaw < 5arcsec
(300mm stroke)

Very small pitch/yaw
error in long travel
motion

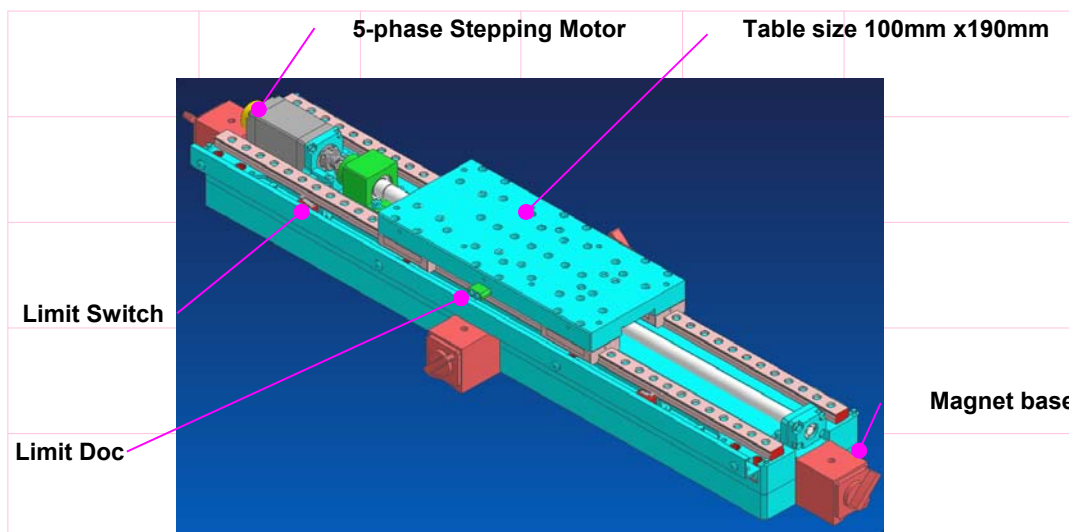
◆ 1 kg Load Capacity.

◆ Table Size
100mm x 190mm

◆ Material : Steel

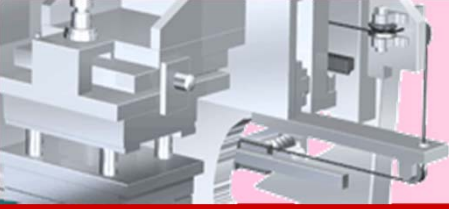
◆ Self weight: 14kg

◆ The stage is sensitive
to surface flatness of
the mounted table. The
stage is fixed by using
four magnet bases, not
screws.



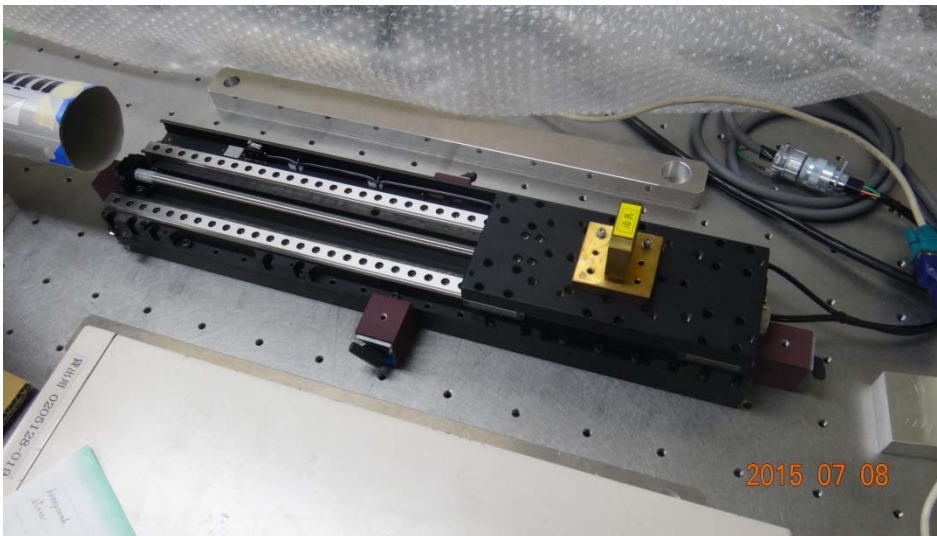
Specifications

Model	HPT-2
Drive	Stepping Motor
Travel range	300mm
Pitch/Yaw error	< 5 arcsec / full stroke 300mm
Speed	5mm / sec
Resolution	0.5 μm /step (half step mode) (calculated value)
Load Capacity	1kg
Dimension	100 x 500 x 70 (W x L x H : mm)

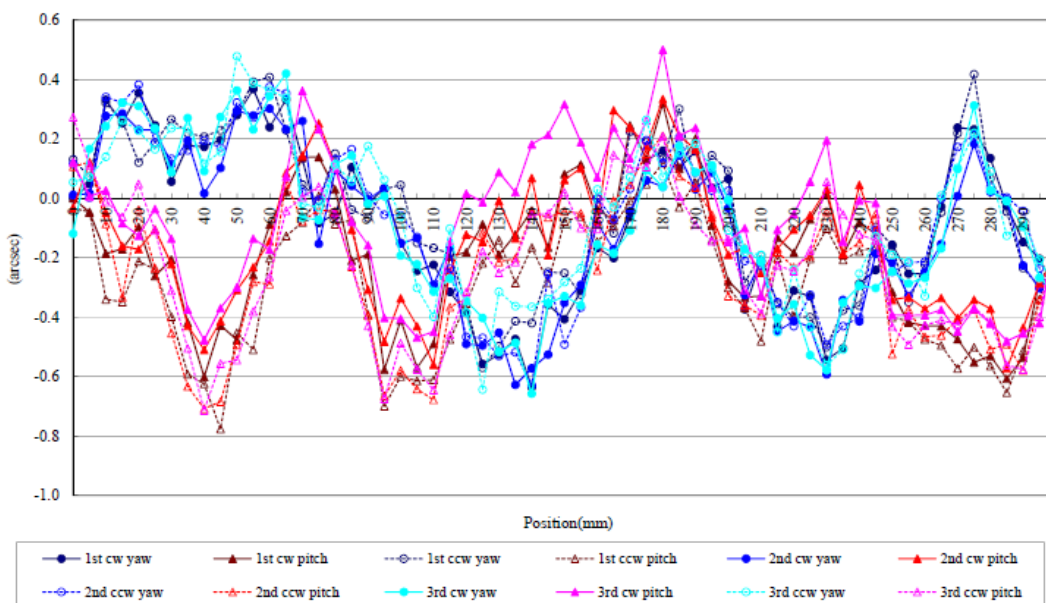


Long Travel Translation Stage for Delay Line <HPT-2> Continued

This photo shows a measurement in our factory.



Here is a real data of pitch & yaw error.



Features

- ◆ Useful device for
 - Delay line of Laser
 - Long stroke scan

- ◆ Pitch/Yaw < 5arcsec
(300mm stroke)

Very small pitch/yaw error in long travel motion

- ◆ 1 kg Load Capacity.

- ◆ Table Size
100mm x 190mm

- ◆ Material : Steel

- ◆ Self weight : 14kg

◆ The stage is sensitive to surface flatness of the mounted table. The stage is fixed by using four magnet bases, not screws.